



Bellarine Bayside, your local foreshore manager, is responsible for the management of 24km of foreshore and Crown asset infrastructure between Point Richards and Edwards Point. We operate Portarlington Seaside Resort and five seasonal foreshore camping reserves at Indented Head and St Leonards, as well as Parks Hall Community Centre & Indented Head Boat Club Hall.

PO Box 40, Portarlington, Vic 3223 PH: 5259 3311 FAX: 5259 2272 info@bellarinebayside.com.au

www.bellarinebayside.com.au

PORTARLINGTON SEASIDE RESORT

Indented Head Foreshore Camping Reserves | St Leonards Foreshore Camping Reserves

Vision 2018 – Bellarine Bayside's Strategic Plan 2009-2018

The release for public comment of 'Vision 2018 – Bellarine Bayside's Draft Strategic Plan 2009–2018' has certainly raised some attention in the local media and amongst the community.

Some members of the community have asked, "What happens after the feedback has been received?"

1. All feedback received will be presented to the committee in June.

2. The committee members will review the feedback over a 4 week period.

3. The committee will determine from the feedback changes to the draft plan.

4. The plan will be amended.

5. The amended plan will be:

a. Prioritised

b. Costed (including funding models and grants required)

c. Scheduled (time-line)

6. A final plan including the schedules of priority, cost and scheduling will be presented to government.

7. The final "Vision 2018 – Bellarine Bayside's Strategic Plan 2009-2018" will be launched.

The Committee encourages all interested persons to review the plan and submit their comments by 3rd June 2009. The plan can be downloaded from www.bellarinebayside.com.au and will be on display in reception at Portarlington Seaside Resort (B&W copies

are available here). Copies of the plan are on exhibition in Bellarine Bayside's Portarlington Information Rotunda (Little's Reserve) and in shops and cafés.

Bellarine Bayside will be holding public exhibition and information meetings on the following dates and locations:

St Leonards – St Leonards Memorial Hall
Sunday 26th April 2009 Completed

Indented Head – Batman Park
Sunday 17th May 2009 2pm – 4pm

Portarlington – Parks Hall Community Centre
Sunday 24th May 2009 2pm – 4pm



Climate Change, Channel Deepening, Storm Surge – Any, Some or All?

Events of Sunday April 26th with the higher than normal sea levels, seaward inundation, flooding and erosion have raised many questions and discussions about: **What was the cause?**

Bellarine Bayside are not about to tell you the answer, because we quite simply don't know!

There will be experts from a range of fields stating "this" or "that" as being the cause, in the past week we've heard it all. It could be:

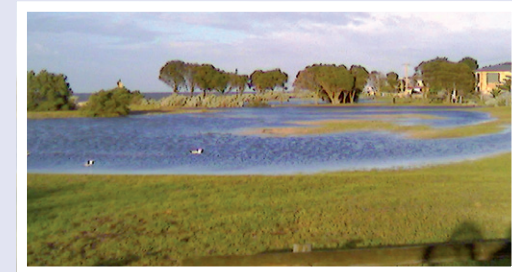
1. Climate Change – world, experts are saying that glaciers are melting, that water temperatures are rising and island nations like Tuvalu and Kiribati are preparing to evacuate – and the satellite mapping appears to agree with them.

2. Channel Deepening – regional, experts are saying that channel deepening may have increased water levels in the bay, on certain tides and in certain weather conditions by up to 1 cm?

3. Storm Surge – local, storm event combined with high water levels certainly cause more damage and erosion than just high water. Experts are predicting more frequent and more ferocious storms.

The recent events could have been any one, some, or all of these impacting along the Bellarine coast. What we do know is that the northern Bellarine coast has been flooded and eroded in the past. Inspection of the erosion hot spots have uncovered previously dumped rubble and fill meaning that others before us have had to deal with erosion like this. What does it mean for the future? Bellarine Bayside and DSE have just released for tender a 'Coastal Vulnerability Study' that will look at the coast between Point Richard and Edwards Point and deliver recommendations as to how to manage the coast into the future. In the interim, Bellarine Bayside will clean up

and repair damage that has occurred recently and lobby government for funding to undertake any works that are recommended from the study.



Public toilets

With the camping season finished in Indented Head and St Leonards, it's important for residents to know that Bellarine Bayside continue to maintain and have open for the public the public toilets at Anderson Reserve, Taylor Reserve (disabled), Batman Park – all in Indented Head, and Area 3 – in St Leonards. Please take advantage of the foreshore public open space, have a BBQ, let the kids run wild on the playgrounds, and enjoy the quieter months along the foreshore.

Community Sponsorships

This month Bellarine Bayside has sponsored the following community groups:

- Greek Elderly Club of the Bellarine
- Portarlington Walking Group
- Portarlington Primary School

Tim Page-Walker

Chief Executive Officer