

Portarlinton



Legend

-  Category 1 - Off-leash 'Supervised' Area
-  Category 2 - Conditional Off-leash 'Supervised' Area (1 Mar-23 Dec – off leash and 24 Dec – 28/29 Feb – on leash)
-  Category 3 - Conditional On-leash 'Controlled' Area (1 Mar-23 Dec – on leash and 24 Dec – 28/29 Feb and Easter – prohibited)
-  Category 4 - On-leash 'Controlled' Area
-  Category 6 - Prohibited
-  Category 7 - Dogs permitted off leash and supervised whilst campsite is closed. Dogs permitted on leash on the designated trail only whilst the campsite is open. Dogs prohibited from the camping grounds whilst the campsite is open.
-  Emergency Markers

The Esplanade

CITY OF GREATER
GEELONG



**Bellarine
Bayside**
Coastal Management

INDENTED HEAD

Legend

-  Category 1 - Off-leash 'Supervised' Area
-  Category 2 - Conditional Off-leash 'Supervised' Area (1 Mar-23 Dec – off leash and 24 Dec – 28/29 Feb – on leash)
-  Category 3 - Conditional On-leash 'Controlled' Area (1 Mar-23 Dec – on leash and 24 Dec – 28/29 Feb and Easter – prohibited)
-  Category 4 - On-leash 'Controlled' Area
-  Category 6 - Prohibited
-  Category 7 - Dogs permitted off leash and supervised whilst campsite is closed. Dogs permitted on leash on the designated trail only whilst the campsite is open. Dogs prohibited from the camping grounds whilst the campsite is open.
-  Emergency Markers

36B

GRASSY POINT ROAD

COACH ROAD

35B

HOOD ROAD

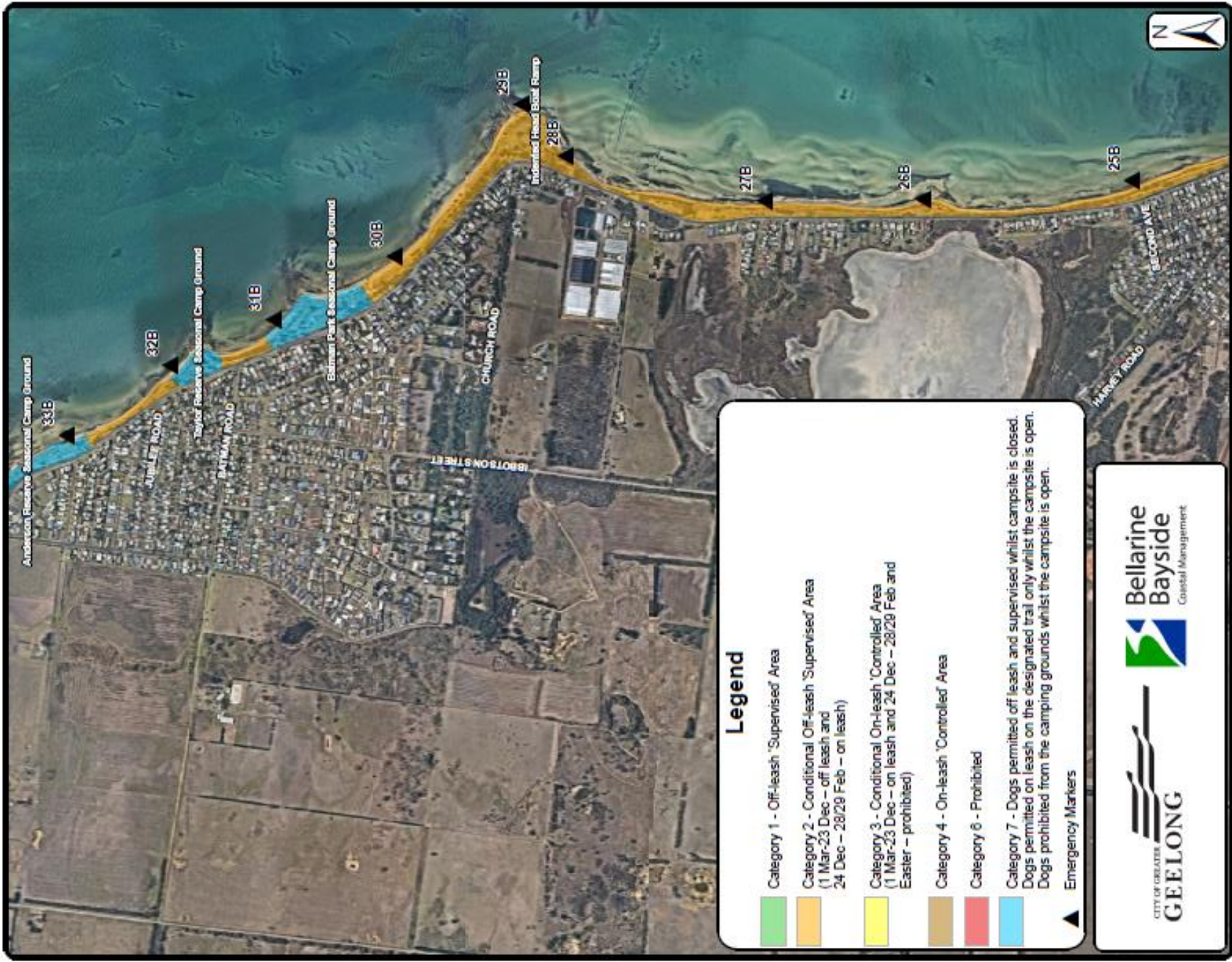
34B

Anderson Reserve
Seasonal
Camp Ground

33B



Map 3 of 4: Indented Head to St. Leonards



Legend

- Category 1 - Off-leash 'Supervised' Area
- Category 2 - Conditional Off-leash 'Supervised' Area
(1 Mar-23 Dec - off leash and
24 Dec - 28/29 Feb - on leash)
- Category 3 - Conditional On-leash 'Controlled' Area
(1 Mar-23 Dec - on leash and 24 Dec - 28/29 Feb and
Easter - prohibited)
- Category 4 - On-leash 'Controlled' Area
- Category 6 - Prohibited
- Category 7 - Dogs permitted off-leash and supervised whilst campsite is closed.
Dogs permitted on-leash on the designated trail only whilst the campsite is open.
Dogs prohibited from the camping grounds whilst the campsite is open.
- Emergency Markers



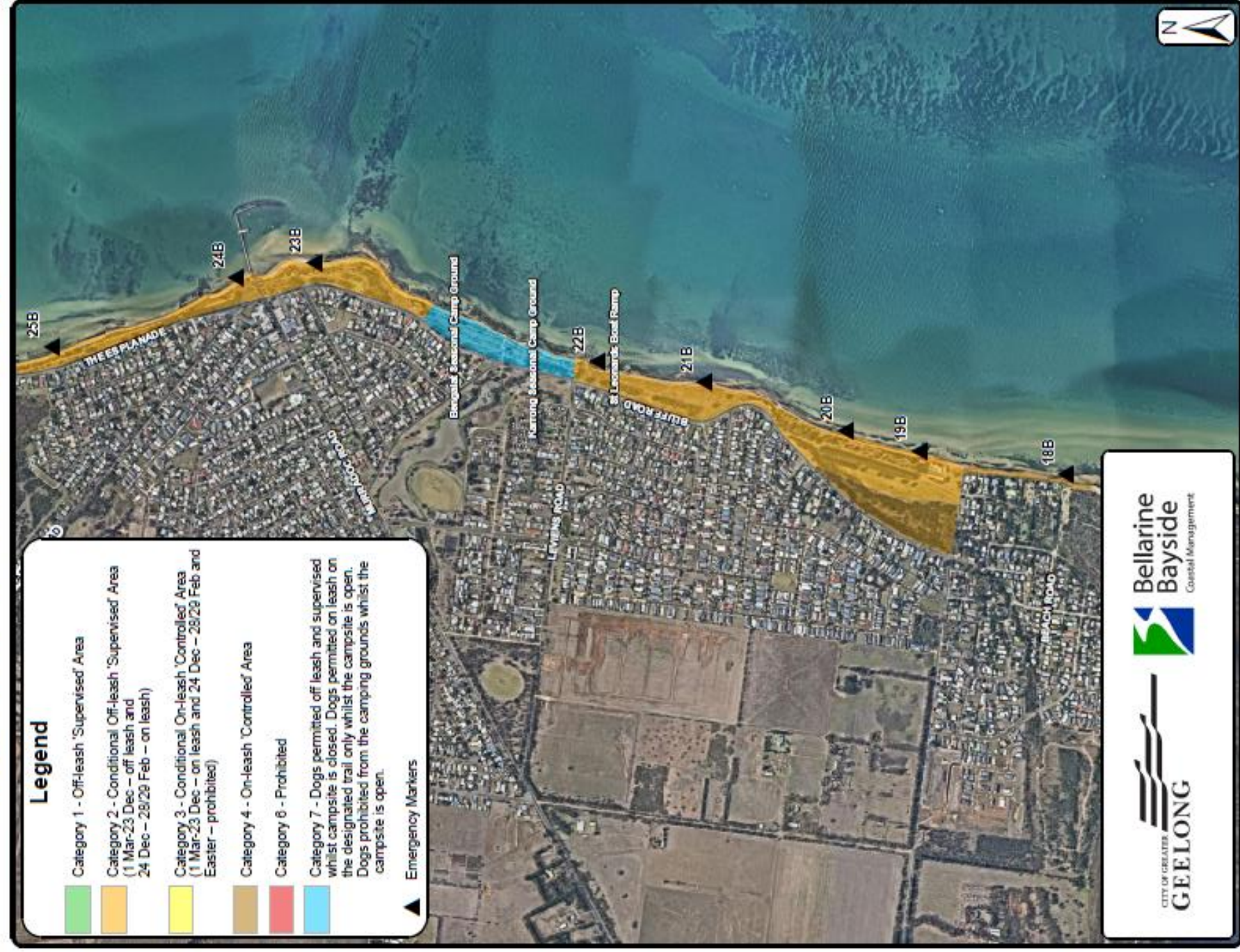
CITY OF GEELONG



**Bellarine
Bayside**
Coastal Management



Map 4 of 4: St. Leonards to Edwards Point



CITY OF GREATER
GEE LONG



**Bellarine
Bayside**
Coastal Management

