

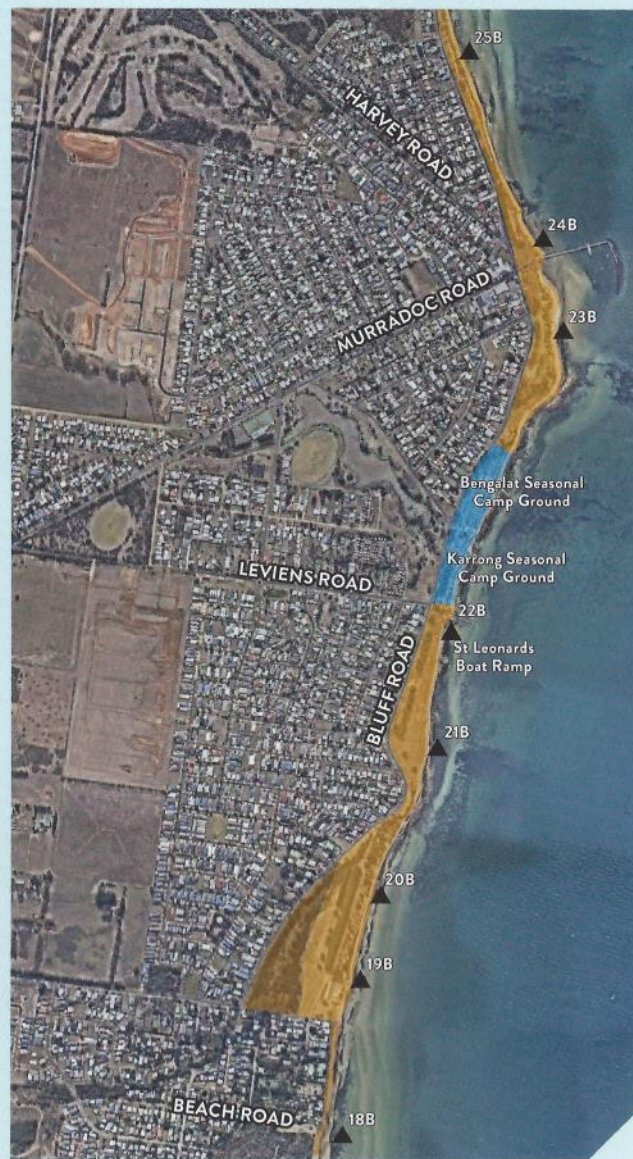
INDENTED HEAD TO ST LEONARDS



LEGEND

- Supervised dogs are only permitted off-leash from 1 March to 23 December (must be kept on-leash at all other times).
- Campsite closed: supervised dogs are permitted off-leash.
- Campsite open: on-leash dogs are permitted on the designated trail only, but are prohibited from the camping grounds.

ST LEONARDS TO EDWARDS POINT



Find out more at www.geelongaustralia.com.au/pets

LATEST NEWS:

- CityofGreaterGeelong
- @GreaterGeelong
- @CityofGreaterGeelong
- CityofGreaterGeelong



TAKE THE LEAD ON THE NORTHERN BELLARINE



Dog controls on the Northern Bellarine are designed to support the fair use of the coast for all, including dogs. They also help protect wildlife and areas of high environmental significance.

There are plenty of places to exercise your dog off-leash on the Northern Bellarine, although some restrictions do apply throughout the busy summer season (see maps for more information).

As these areas are also used by the general community and other dog owners, you must have 'effective control' of your dog if you plan to let them off-leash. If you're not sure of how they will act, keep them on a leash.

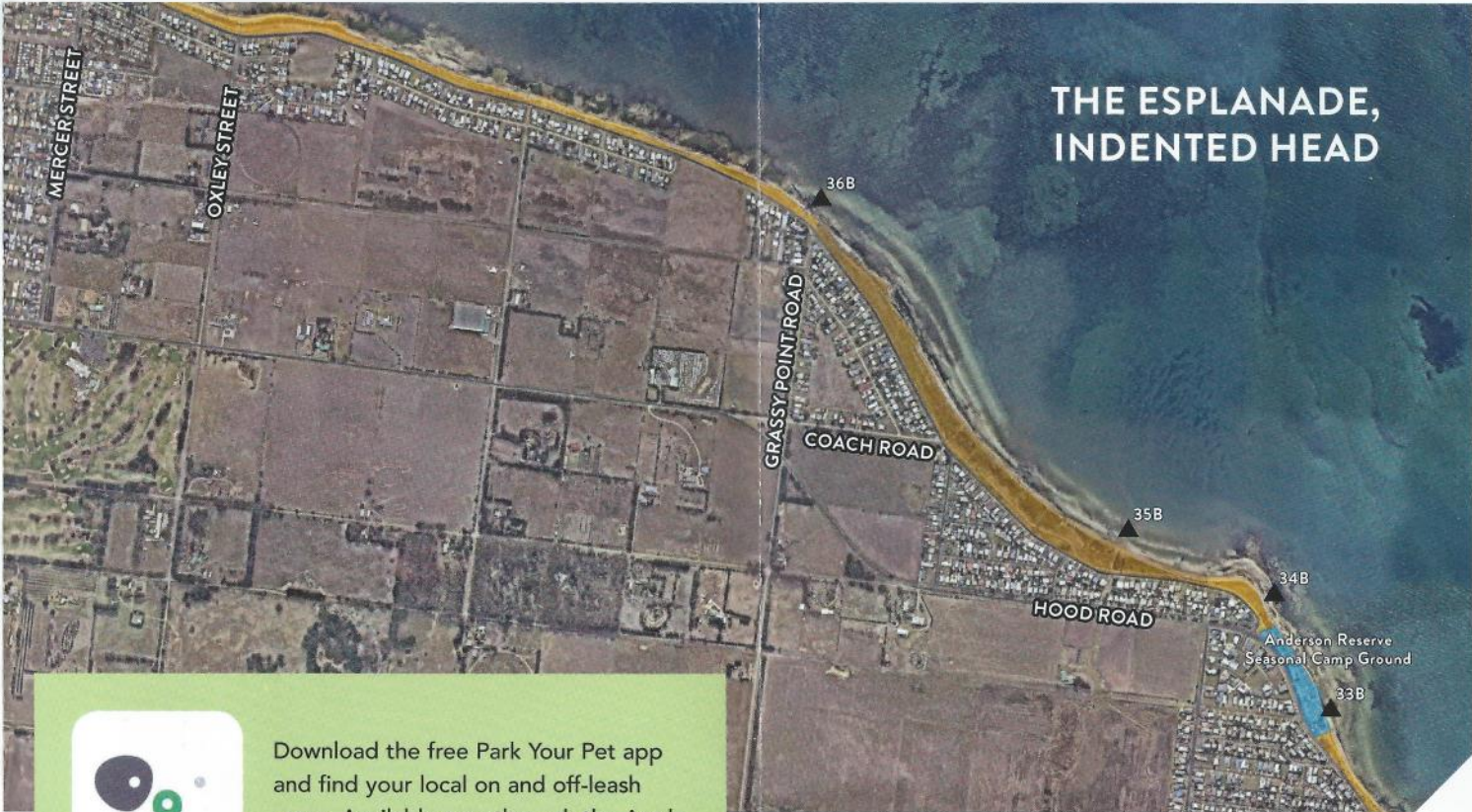
Please also remember to always carry poo bags and pick up and dispose of all dog waste in the bin.

Effective control means:

- ✓ Your dog is in hearing range.
- ✓ Your dog always comes when it is called.
- ✓ You can see your dog at all times.
- ✓ Your dog does not have a history of aggressive, over excitable or anti-social behaviour.
- ✓ Your dog does not chase wildlife or enter habitat areas.

LEGEND

- Supervised dogs are permitted off-leash.
Note: Portarlington Recreation Reserve is on-leash during organised sport.
- Supervised dogs are only permitted off-leash from 1 March to 23 December (must be kept on-leash at all other times).
- On-leash dogs are permitted from 1 March to 23 December (dogs prohibited at all other times).
- Dogs must be kept on-leash at all times.
- Dogs are prohibited from these areas.
- Campsite closed: supervised dogs are permitted off-leash.
Campsite open: on-leash dogs are permitted on the designated trail only, but are prohibited from the camping grounds.



Download the free Park Your Pet app and find your local on and off-leash areas. Available now through the Apple App Store and Google Play.